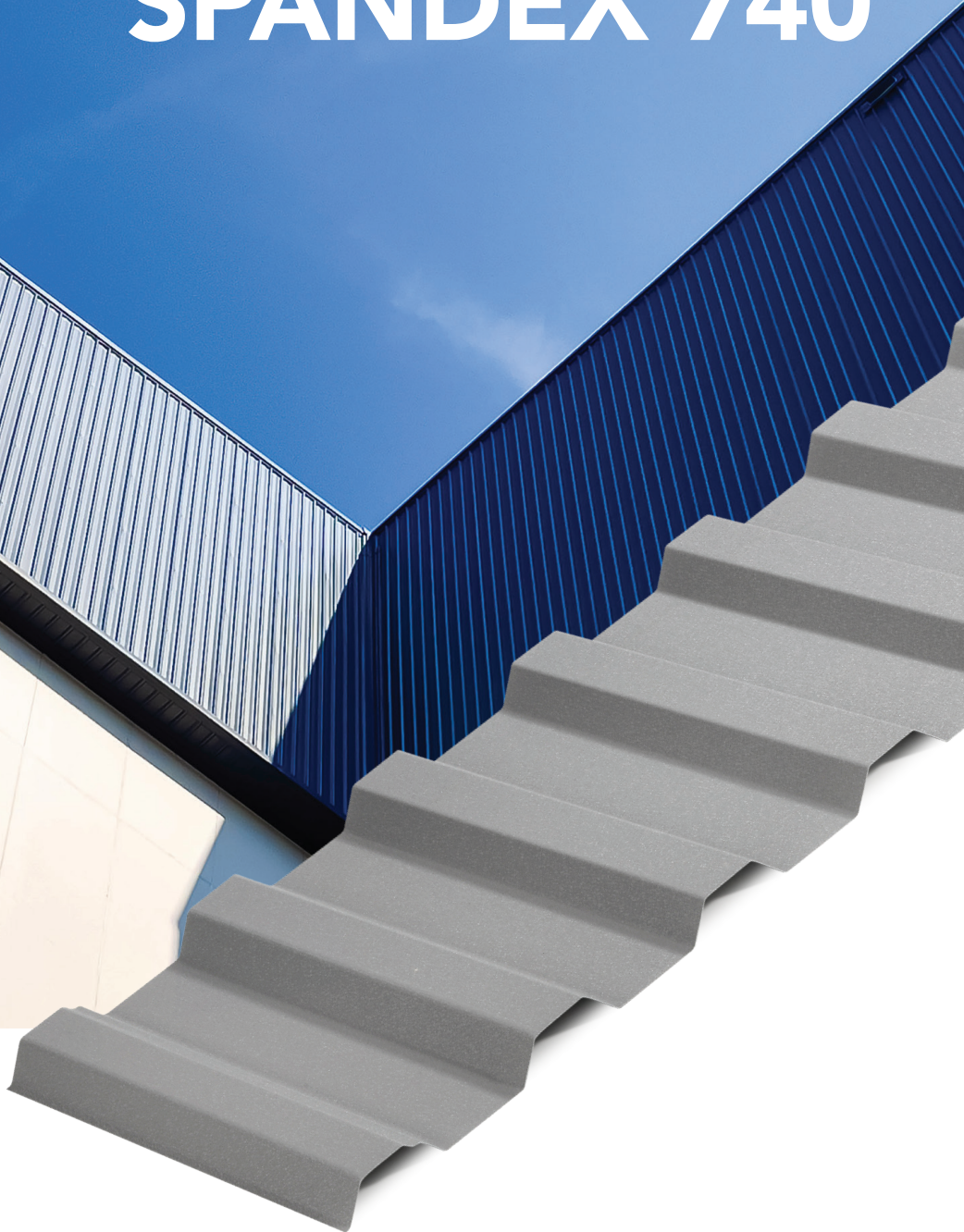




**SENGDEK<sup>®</sup>**

YOUR ROOFING SOLUTION

# SENGDEK<sup>®</sup> SPANDEX 740



# SENGDEK® SPANDEX 740

The **SENGDEK® SPANDEX 740** is a clean and modern cladding profile designed primarily for factory walls, fencing, boundary applications, and architectural finishing. With a cover width of 740mm and a rib height of 20mm, it delivers a consistent and streamlined appearance, making it ideal for projects that require visual uniformity.

While the **SPANDEX 740** can be used for roofing in certain conditions, it is more commonly recommended for wall applications due to its shallower rib depth, which may be less effective for water drainage compared to deeper roof profiles.

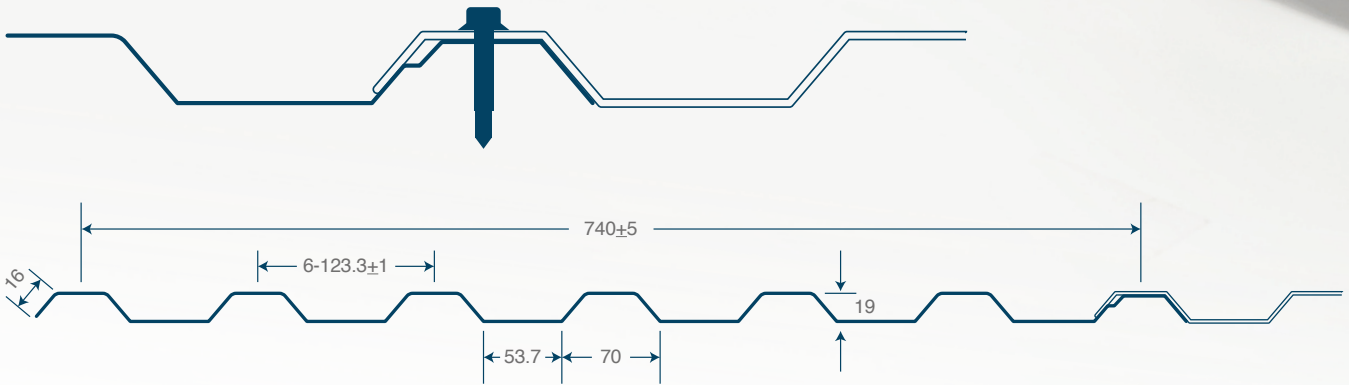
This panel uses an exposed fastener system, offering a bold industrial look and straightforward installation — perfect for both vertical and horizontal use.

## Key Features:

- **Suitable for:**  
Factory walls, fences, boundary cladding, edge detailing, and other wall finishes
- **Fastening Type:**  
Exposed screw system
- **Application:**  
Ideal for wall cladding; roofing use is optional based on design considerations

**SENGDEK® SPANDEX 740** is a practical choice for achieving a neat and unified appearance across various building components, blending durability with design flexibility.

## FIXING GUIDE

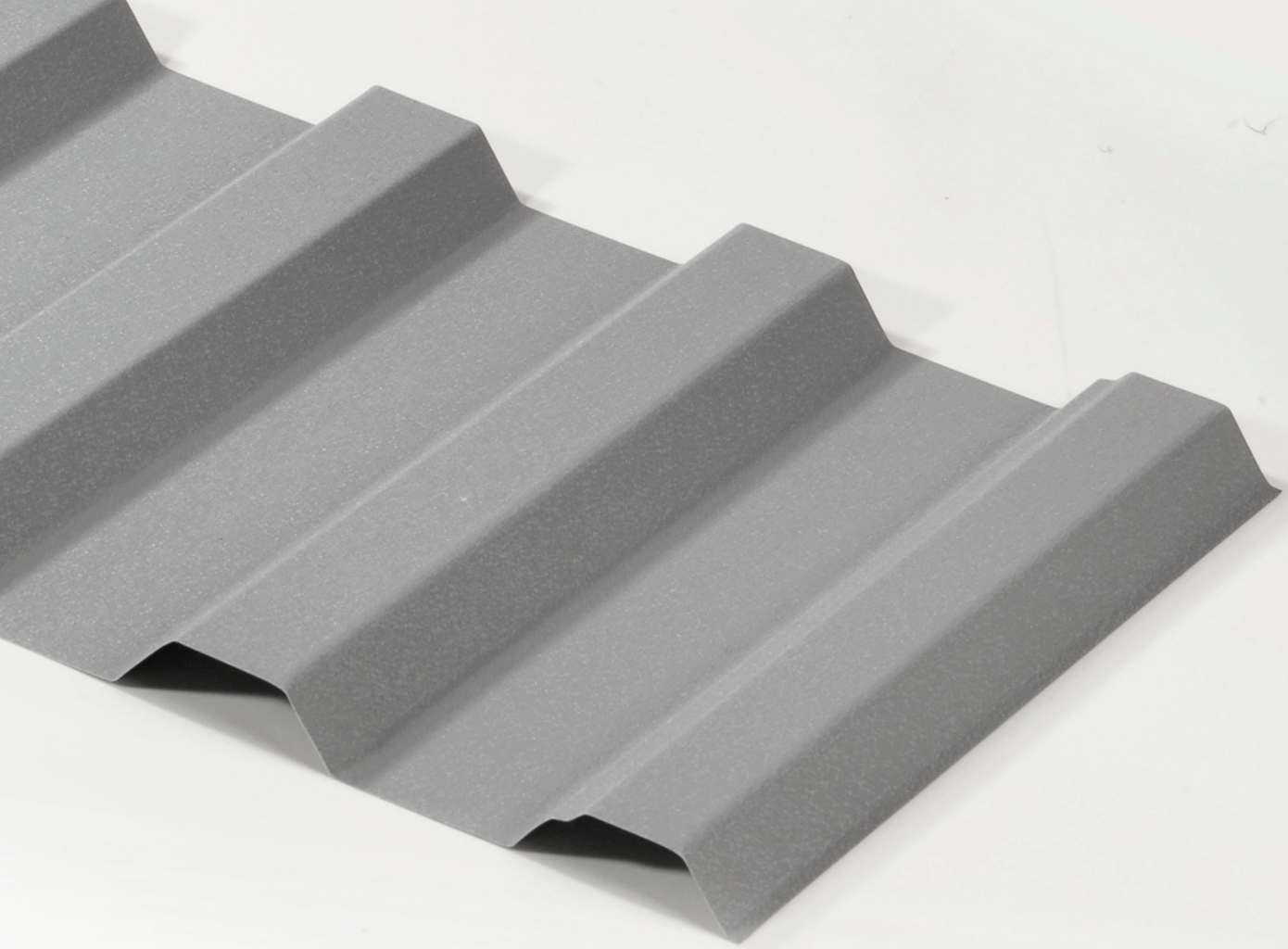


## PRODUCT SPECIFICATION

<b>Profile</b>	<b>SENGDEK® SPANDEX 740</b>
<b>Material</b>	CSC Realcolor Primero, Tekstur, Thermoshield, Supreme & Maruichi Tru-Aluzinc AZ150
<b>Steel Grade</b>	G550 / G300
<b>Thickness (mm)</b>	TCT 0.35 / 0.40 / 0.47 / 0.53
<b>Effective Width (mm)</b>	740
<b>Rib Height (mm)</b>	20
<b>Application</b>	Industrial Buildings, Commercial Facilities, Residential Projects.
<b>Min Roof Pitch</b>	3° Without End Lap

## SAMPLE OF SPECIFICATION

**SENGDEK® SPANDEX 740** profiled, 0.47mm TCT Hi tensile Metal Roofing in prepainted zinc galvanized CSC Realcolor Primero c/w CIDB PPS MS2500:2020. Metal roofing to be fixed with Class 3 or above fastener in single length laid strictly in detail accordance with manufacturer's instruction and Architect's approval.



## LIMIT STATE CAPACITY LOAD TABLE

MAXIMUM ALLOWABLE LOAD (KN/m <sup>2</sup> )								
TCT (mm)	Metal Deck Span (m)							
	0.6	0.9	1.2	1.5	1.8	2.1	2.4	2.8
0.35	12.610	5.604	3.152	2.018	1.401	1.029	0.788	0.579
0.40	14.982	6.659	3.745	2.397	1.665	1.223	0.936	0.688
0.45	17.450	7.756	4.363	2.792	1.939	1.425	1.091	0.801
0.47	18.358	8.159	4.589	2.937	2.040	1.499	1.147	0.843
0.53	21.177	9.412	5.294	3.388	2.353	1.729	1.324	0.972

Note:

1. Table as per standard BS5950 Part 5 and MS 1553
2. Self-weight of metal deck, G= 0.10KPa, Live Load, Q= 0.25KPa & Wind Load, W= 0.65KPa used as recommended loading.
3. Limit State Capacity Load Table was referred to 1.4W-1.0G as recommended Load Combination
4. Table was refer to Simply Span Support of Metal Deck

# RECOMMENDED MAXIMUM SPAN OF SUPPORT

TCT (mm)	Roof		Wall		Overhang (mm)
	Internal Span (mm)	End Span (mm)	Internal Span (mm)	End Span (mm)	
0.35	2420	2100	2480	2160	100
0.40	2630	2290	2700	2350	150
0.45	2840	2470	2920	2540	200
0.47	2920	2530	2990	2600	225
0.53	3130	2720	3210	2790	275

Note:

1. Table as per standard BS5950 Part 5 and MS 1553
2. Self-weight of metal deck, G= 0.10KPa, Live Load, Q= 0.25KPa & Wind Load, W= 0.65KPa used as recommended loading.
3. Roof: Recommended Maximum Span of Support was referred to 1.4W-1.0G as recommended Load Combination Roof Coefficients: Cpe= -0.8, Cpi= 0.2
4. Wall: Recommended Maximum Span of Support was referred to 1.4W recommended Load Combination Wall Coefficients: Cpe= -0.5, Cpi= 0.2
5. Maximum Deflection presumed for Overhang= Overhang/180

# RECOMMENDED MAXIMUM LENGTH (m)

Rainfall Intensity (mm/hr)	Roof Pitch (Degree)			
	3	5	7	10
150	76	94	105	129
200	57	71	79	97
250	45	57	63	78
300	38	47	53	65
400	34	43	47	58
500	23	28	32	39

# SECTION PROPERTIES

BMT	TCT	Weight	Modulus of Elasticity	Second Moment of Area		Second Modulus		Radius of Gyration	
				Ix	Iy	Zx	Zy	Rx	Ry
mm	mm	Kg/m <sup>2</sup>	GPa	10 <sup>3</sup> mm <sup>4</sup>	10 <sup>3</sup> mm <sup>4</sup>	10 <sup>3</sup> mm <sup>4</sup>	10 <sup>3</sup> mm <sup>3</sup>	mm	mm
0.30	0.35	3.39	205	17.759	15146.400	1.860	37.244	8.057	235.295
0.35	0.40	3.88	205	20.721	17671.887	2.164	43.453	8.057	235.300
0.40	0.45	4.36	205	23.684	20197.685	2.467	49.663	8.058	235.305
0.42	0.47	4.56	205	24.869	21208.091	2.588	52.147	8.058	235.307
0.48	0.53	5.14	205	28.426	24239.607	2.950	59.599	8.058	235.312

Note :

1. Profile Width Effective Cover- Nominal 740mm
2. Profile Width Overall- Nominal 810mm
3. Profile Height- Nominal 19mm



# SENGDEK®

# YOUR ROOFING SOLUTION

## FACTORY ADDRESS

**SJ CLASSIC INDUSTRIES SDN. BHD. (434775-H)**

Kg Parit Ju, Mk 4, Simpang Kiri, 83050 Batu Pahat, Johor

### Telephone Number

07- 418 8888

07- 418 8889

07- 418 8880

07- 418 5852

07- 418 5853

### Fax Number

07- 418 5854

07- 418 6333

## CENTRAL REGION OFFICE ADDRESS

5-03A, 2 Rio Tower, Persiaran Rio, Bandar Puteri, 47100 Puchong, Selangor.

### Telephone Number

012-7573860

### Office Number

03-80516798

### Website

[sengdek.com](http://sengdek.com)

### Email

[enquiry@sengdek.com](mailto:enquiry@sengdek.com)